

# PLAN OF SUBDIVISION

PART OF LOT 28  
CONCESSION 8  
TOWNSHIP OF SIDNEY  
NOW IN THE CITY OF QUINTE WEST  
COUNTY OF HASTINGS

METRIC SCALE 1 : 1000



KEITH WATSON O.L.S.

Approved under Section 51 of the Planning Act, Ch. P. 13,  
R.S.O. 1990, by the Council of the Corporation  
of the City of Quinte West this 25 day of  
September, 2007.

*Charles Murphy*  
CHARLES MURPHY  
Director of Planning & Development  
Corporation of the City of Quinte West



# PLAN 21M-026

I CERTIFY THAT THIS PLAN 21M-026 IS REGISTERED  
IN THE LAND REGISTRY OFFICE FOR THE LAND  
TITLES DIVISION OF HASTINGS (21) AT 9:31  
O'CLOCK ON THE 11 DAY OF October  
2007, AND ENTERED IN THE REGISTER FOR  
PROPERTY IDENTIFICATION NUMBER  
40359-0004  
AND REQUIRED CONSENTS AND  
AFFIDAVITS ARE REGISTERED AS PLAN  
DOCUMENT No. HT 39651

*S.G. Moore*  
S.G. MOORE  
Dep. LAND REGISTRAR

THE SUBDIVISION REPRESENTED BY THIS PLAN  
COMPRISES PART OF PIN No. 40359-0004

LOT AREAS			
LOT	AREA	LOT	AREA
1	0.499 Hect.	12	0.615 Hect.
2	0.658 Hect.	13	0.608 Hect.
3	0.793 Hect.	14	0.870 Hect.
4	0.533 Hect.	15	0.690 Hect.
5	0.758 Hect.	16	0.756 Hect.
6	0.894 Hect.	17	0.892 Hect.
7	0.803 Hect.	18	0.760 Hect.
8	0.886 Hect.	19	0.746 Hect.
9	2.120 Hect.	20	0.573 Hect.
10	0.936 Hect.	21	0.626 Hect.
11	0.638 Hect.	22	0.810 Hect.

METRIC :  
DISTANCES SHOWN ON THIS PLAN ARE  
IN METRES AND CAN BE CONVERTED  
TO FEET BY DIVIDING BY 0.3048.

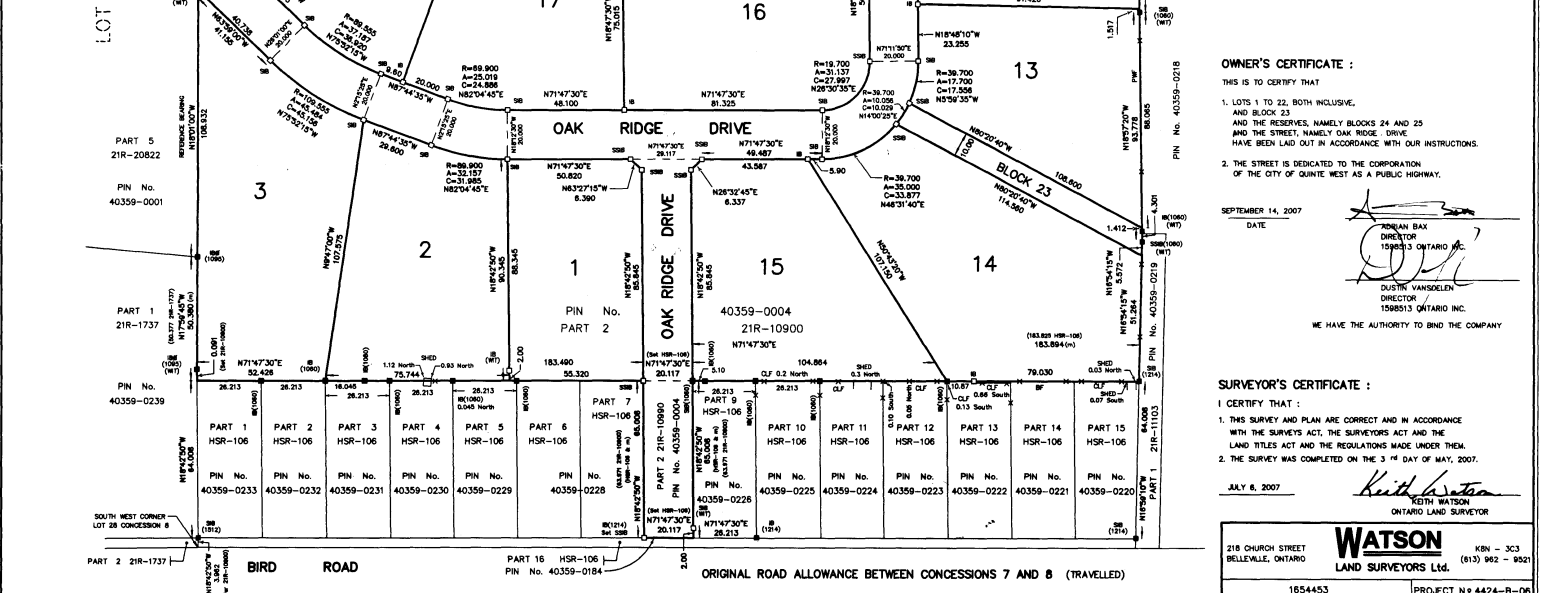
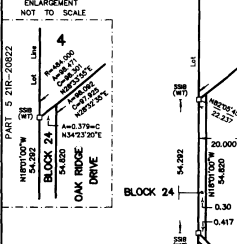
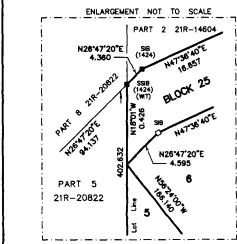
- LEGEND :
- DENOTES SURVEY MONUMENT FOUND
  - SURVEY MONUMENT PLANTED
  - SIB STANDARD IRON BAR
  - SSIB SHORT STANDARD IRON BAR
  - IB IRON BAR
  - CC CUT CROSS
  - RB ROCK BAR
  - (1060) N. I. WATSON O.L.S. (1060)
  - (1095) J. D. CARTER O.L.S. (1095)
  - (1214) G. F. STEELE O.L.S. (1214)
  - (1434) R. L. FENNELL O.L.S. (1434)
  - (1580) K. N. BOEHME O.L.S. (1580)
  - (W) WITNESS
  - (M) MEASURE
  - RF RAIL FENCE
  - PWF POST AND WIRE FENCE
  - BF BOARD FENCE
  - CLF CHAIN LINK FENCE

NOTES :  
BEARINGS ARE ASTROMERIC AND ARE REFERRED  
TO THE EAST LIMIT OF PART 5, PLAN 21R-20822  
HAVING A BEARING OF N107°00'00"E  
FENCES ARE ON THE PROPERTY LIMITS  
UNLESS OTHERWISE NOTED.

OWNER'S CERTIFICATE :  
THIS IS TO CERTIFY THAT  
1. LOTS 1 TO 22, BOTH INCLUSIVE,  
AND BLOCK 23  
AND THE RESERVES, NAMELY BLOCKS 24 AND 25  
AND THE STREET, NAMELY OAK RIDGE DRIVE  
HAVE BEEN Laid OUT IN ACCORDANCE WITH OUR INSTRUCTIONS.  
2. THE STREET IS DEDICATED TO THE CORPORATION  
OF THE CITY OF QUINTE WEST AS A PUBLIC HIGHWAY.

SEPTEMBER 14, 2007  
DATE  
*Norman Bax*  
NORMAN BAX  
DIRECTOR  
158513 ONTARIO INC.  
*Dustin Vanscoelen*  
DUSTIN VANSCOELEN  
DIRECTOR  
158513 ONTARIO INC.  
WE HAVE THE AUTHORITY TO BIND THE COMPANY

SURVEYOR'S CERTIFICATE :  
I CERTIFY THAT :  
1. THIS SURVEY AND PLAN ARE CORRECT AND IN ACCORDANCE  
WITH THE SURVEY ACT, THE SURVEYORS ACT AND THE  
LAND TITLES ACT AND THE REGULATIONS MADE UNDER THEM.  
2. THE SURVEY WAS COMPLETED ON THE 3<sup>RD</sup> DAY OF MAY, 2007.  
AUG 6, 2007  
*Keith Watson*  
KEITH WATSON  
ONTARIO LAND SURVEYOR



218 CHURCH STREET  
BELLEVILLE, ONTARIO  
**WATSON**  
LAND SURVEYORS LTD.  
K9N - 3C3  
(813) 962 - 9521  
1654453 PROJECT N# 4424-B-06