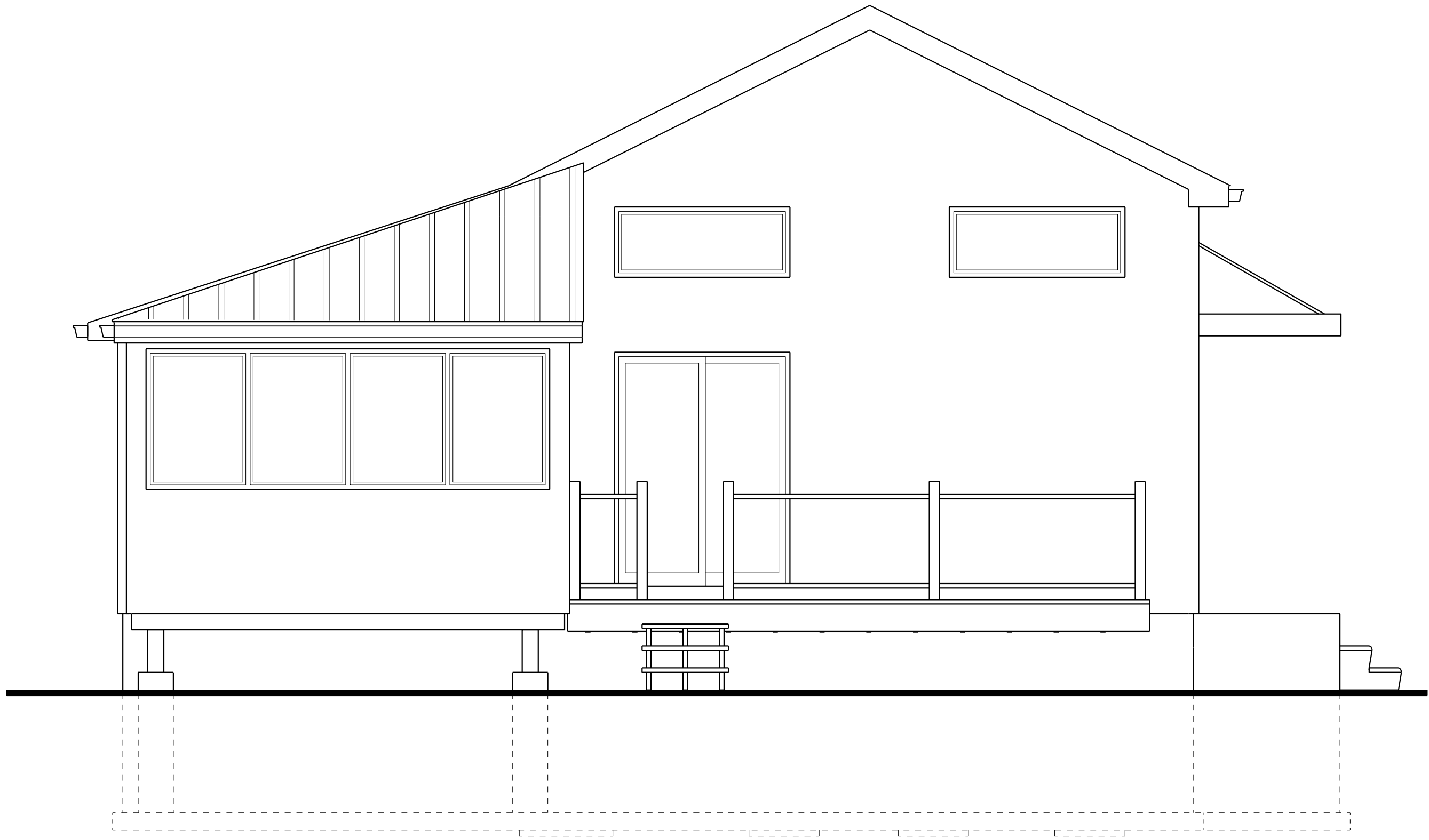


SECOND FLOOR PLAN



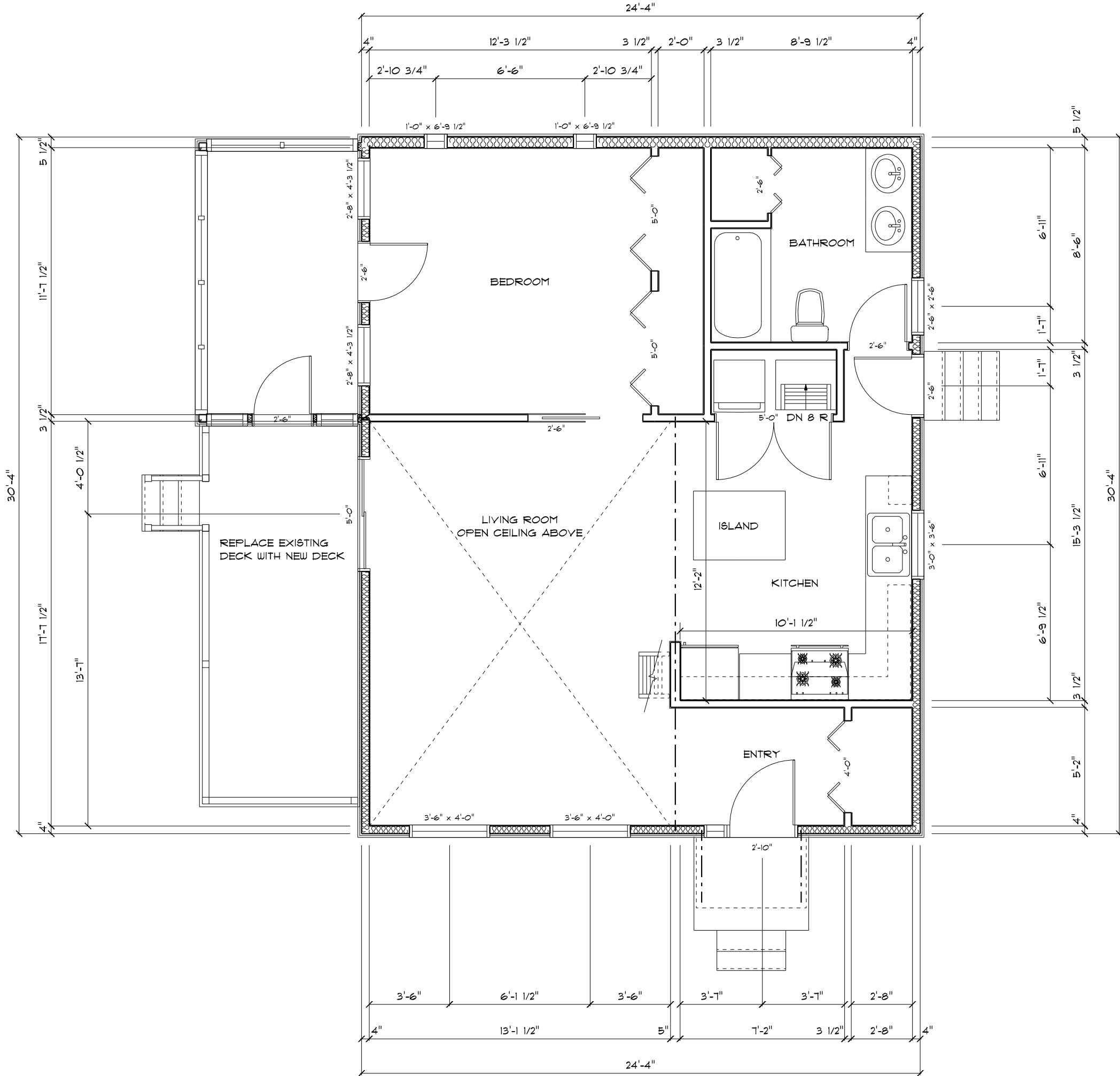
PRELIMINARY FRONT ELEVATION

TOP OF WALL
3'-4"
TOP OF SUBFLOOR
5" 8"
TOP OF WALL
TOP OF WALL
7'-4"
TOP OF SUBFLOOR
9 1/2"
TOP OF FOUNDATION
5'-8"
TOP OF FOOTING



TOP OF WALL
11'-9"
TOP OF SUBFLOOR
9 1/2"
TOP OF FOUNDATION
5'-8"
TOP OF FOOTING

PRELIMINARY LEFT ELEVATION



MAIN FLOOR PLAN